

7. Fault models of the 869 and 2011 earthquakes

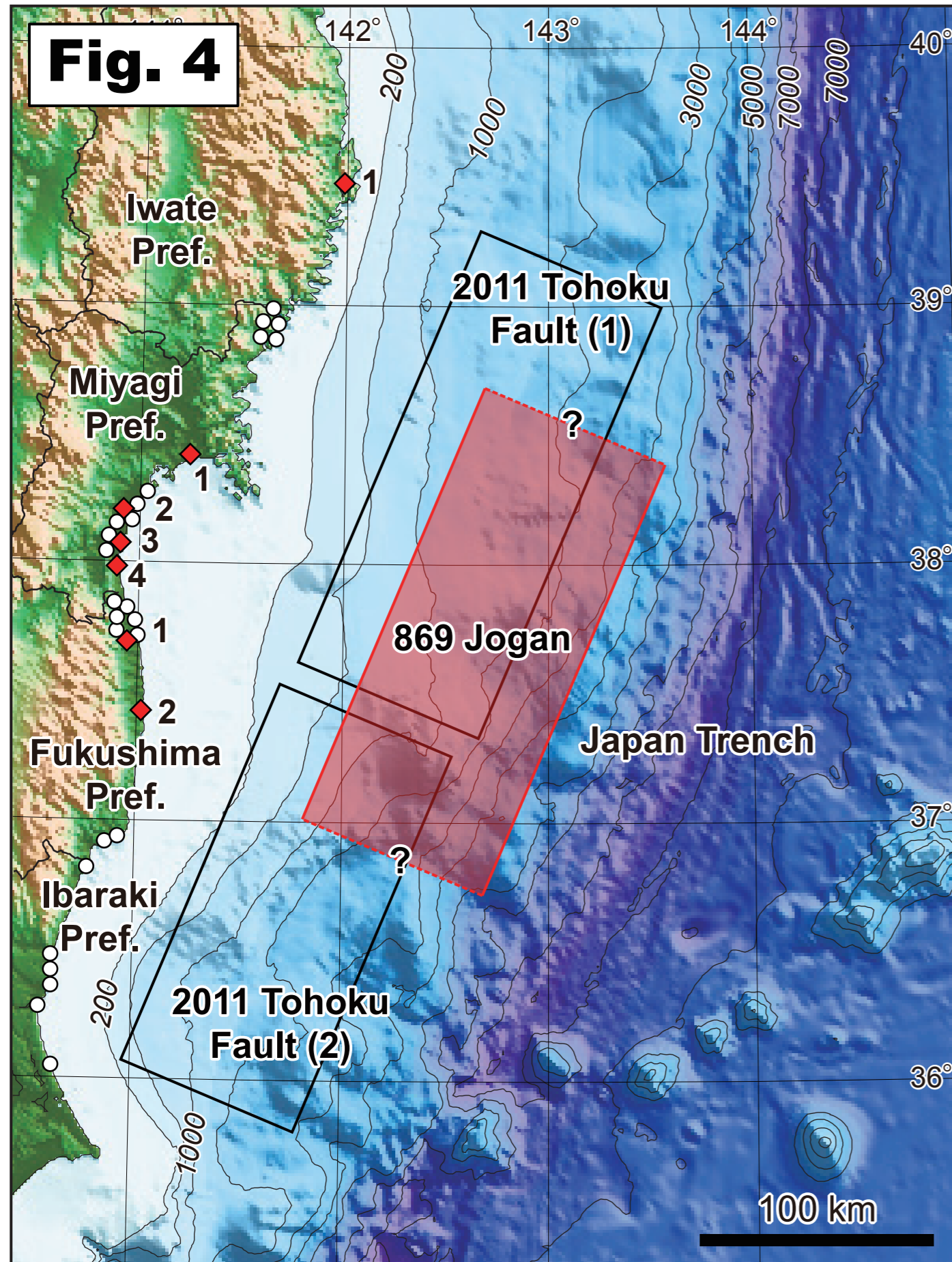


Table 3: Comparison of the fault parameters

Event	H (km)	L (km)	W (km)	θ ($^{\circ}$)	δ ($^{\circ}$)	λ ($^{\circ}$)	U (m)	M_w
869 ^[1]	14	200	85	203	10	90	6.1	8.35
2011 ^[2]	(1)	10	199	85	202	18	27.7	8.7
	(2)	10.1	176	82	201	15	5.9	8.2

Traces of the 869 Jogan tsunami

- Historical record^[5]
- ◆ Tsunami deposit

Distribution of the 869 Jogan tsunami deposit

Iwate Prefecture

1. Otsuchi Bay^[6]

Miyagi Prefecture

1. Ishinomaki^[7]
2. Sendai^[1,8,9,10,11,12]
3. Natori-Iwanuma^[11,12]
4. Watari-Yamamoto^[11,12]

Fukushima Prefecture

1. Soma^[10]
2. Namie^[13]